

Friday 20th March 2026

Tyndale Times



WEEKLY UPDATE

It's been a fantastic week at Tyndale, with our children shining in their performances – showing confidence, talent and real pride in representing our school. We've also received our latest Parent Voice feedback, and the results are exceptional. This reflects the strong culture we are building together every day. Thank you to our staff, children and families – we are very proud to be Team Tyndale creating something very special! Of course, we will keep you updated about the next steps we are taking from the feedback you have provided.

Mr Crouch

LEARNING



This week, Tyndale Primary was alive with the sound of music! Our Year 3 and 4 students wowed parents with an impressive Strings performance, followed by an equally fantastic J-Sax showcase from Years 5 and 6. It was wonderful to see the children take the stage and share their progress; it's clear that their hard work in music lessons this year has truly paid off.

Ms Kirby

NEWS

- **Wraparound Care** - our Friday breakfast and after-school provision is starting today. Please sign up to our breakfast wraparound care on MCAS and after-school through Swift.
- **Energy Helpdesk** - Thursday 26th March at Breakfast Bistro - 08:15-09:15 - Come and meet South Gloucestershire Community Energy Network

STAY IN TOUCH

Team Tyndale

www.tyndaleprimary.co.uk

admin@tyndaleprimary.co.uk

01454 867 180

Follow us on **Facebook**, **Instagram** or **X** to see what we are up to!



**next
WEEK**

KEY DATES



- **Tuesday 24th March 2026** - Year 6 Educational Visit to Yate Town Football Club - Maths Focus
- **Wednesday 25th March 2026** - Year 2 History Off The Page - Great Fire of London Day
- **Thursday 26th March 2026** - Year R (EYFS) Educational Visit to Noah's Ark Farm
- **Thursday 26th March 2026** - Energy Help Desk at Breakfast Bistro



DOJO LEADERBOARD



Year 6	Charlie
Year 5	Artur
Year 4	Marta
Year 3	Jaclyn
Year 2	Luna
Year 1	Arseny
Year R	Norah P



SHOUTOUTS



- **Key Stage Two children** - for their sensational music performances this week!
- **Our wonderful parents and carers** - for providing feedback on the past year and providing us with next steps as we continue to make the Tyndale Family even stronger!
- **Ms Smyth** - For doing some great work on developing our Reading and Writing curriculum!
- **Ms Jefferies** - For always being a welcoming face for all our parents/carers and visitors and working incredibly hard whilst Ms Blyth is off.

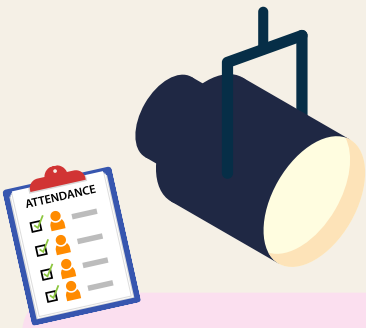


TEAM TYNDALE



- **Vision** - To provide all children with an exceptional education in a warm, welcoming environment that inspires them to lead change and enables them to become curious life-long learners.
- **Values** - Child-centred, Ready, Respectful, Safe, Ambitious, Resilient, Collaborative, Independent
- **Mission** - Best chance of success!

**EXCEPTIONAL
EDUCATION**



ATTENDANCE SPOTLIGHT



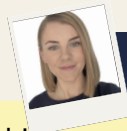
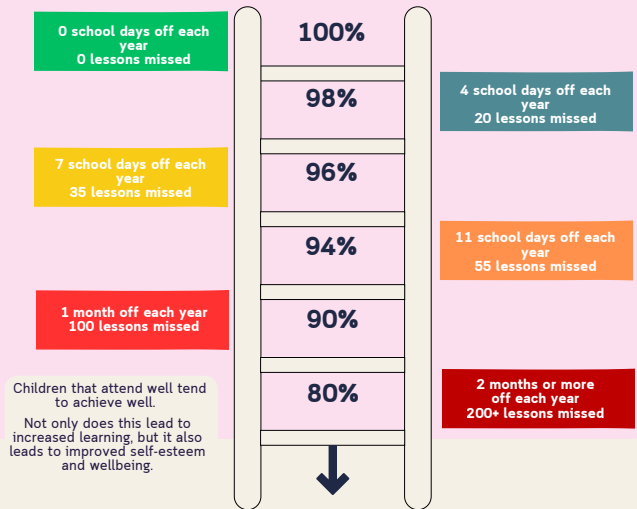
Absence from School

- Absence should only occur when your child is far too ill to attend.
- If your child is suffering from **Colds, Headaches, Tiredness** or **Sore throat** we would suggest that you administer paracetamol or ibuprofen and bring them into school, if their condition deteriorates, we will always call you.
- Family holidays and day trips must be arranged outside of school hours.
- Medical or dental appointments should be arranged outside of school hours, if this is not possible supporting evidence should be provided.

ATTENDANCE FOR THIS WEEK...



YEAR R	96%	YEAR 4	95%
YEAR 1	91%	YEAR 5	94%
YEAR 2	94%	YEAR 6	95%
YEAR 3	91%	WHOLE SCHOOL	94%

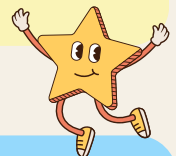


SEND SPOTLIGHT

Parents in South Gloucestershire can access a wide range of support. Local services include parenting programmes, early help services, SEND advice, and peer support groups. For example, South Glos Parent Carers offers drop-ins, workshops, online groups and stay-and-play sessions to provide advice, wellbeing support and opportunities to connect with other families. Early Help services provide targeted support for families facing challenges, including parenting courses and links to community resources. Online resources and helplines are also available, alongside school-based and community support.



CHARACTER SPOTLIGHT



Red Nose Day is important because it raises awareness and helps people facing poverty and hardship. We celebrated by wearing red and taking part in fun activities together. This showed we are collaborative, as we worked as a team, and resilient by joining in and trying new things. It also links to being independent, as we made our own choices to take part, and ambitious by thinking about how we can make a difference in the future.



TINY

THE TYNDALE
TORTOISE



PIN BOARD

