

Friday 27th March 2026

Tyndale Times



WEEKLY UPDATE

This week has been full of purposeful learning and positive moments across the school. It has been particularly pleasing to see the confidence with which pupils are approaching their learning, asking thoughtful questions and supporting one another in class. These everyday moments reflect the strong culture we are continuing to build together at Tyndale. Thank you to our staff for their continued dedication and to our families for your ongoing support – it makes a real difference to our children's experience each day.

Mr Crouch



LEARNING

What a busy week! Year 6 impressed us all by applying their Maths skills to real-life situations at Yate Town FC, while Reception returned from Noah's Ark full of excitement after seeing the animals. Year 2 stepped back in time during their Great Fire of London workshop and, to top it all off, the whole school has been making the most of the sunny weather by enjoying orienteering as part of our PE curriculum!

Ms Kirby

NEWS

- **Last week of term** - Thursday is the last day of term and children finish at 13:30.
- We are still in the process of exploring options for transport around LGV to Tyndale
- We are exploring options for Wraparound Care from September and will update you when we have decided our approach.

STAY IN TOUCH

Team Tyndale

www.tyndaleprimary.co.uk

admin@tyndaleprimary.co.uk

01454 867 180

Follow us on **Facebook**, **Instagram** or **X** to see what we are up to!



**next
WEEK**

KEY DATES



- **Tuesday 31st March 2026** - End of Term Reward
- **Wednesday 1st April 2026** - Breakfast Bistro Exhibition - 08:15-09:00
- **Thursday 2nd April 2026** - Celebration Ceremony
- **Thursday 2nd April 2026** - Last Day of Term - children finish at **13:30**



DOJO LEADERBOARD



| | |
|--------|---------|
| Year 6 | Tobias |
| Year 5 | Kris |
| Year 4 | Lilly |
| Year 3 | Charlie |
| Year 2 | Charlie |
| Year 1 | Jason |
| Year R | Essa |



SHOUTOUTS



- Ella-Rae - for the fantastic effort she has put into her learning this week. You have impressed us all!
- All the parent helpers - for supporting us on our school trips this week. We couldn't do it without you!
- Ms Hillson - for the kindness and patience you show all of the children!
- Gunner - for being a brilliant school therapy dog. Sometimes a cuddle with you is just what we all need!

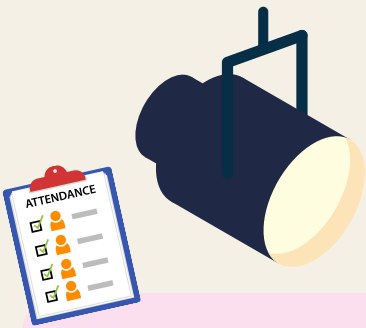


TEAM TYNDALE



- **Vision** - To provide all children with an exceptional education in a warm, welcoming environment that inspires them to lead change and enables them to become curious life-long learners.
- **Values** - Child-centred, Ready, Respectful, Safe, Ambitious, Resilient, Collaborative, Independent
- **Mission** - Best chance of success!

**EXCEPTIONAL
EDUCATION**



ATTENDANCE SPOTLIGHT



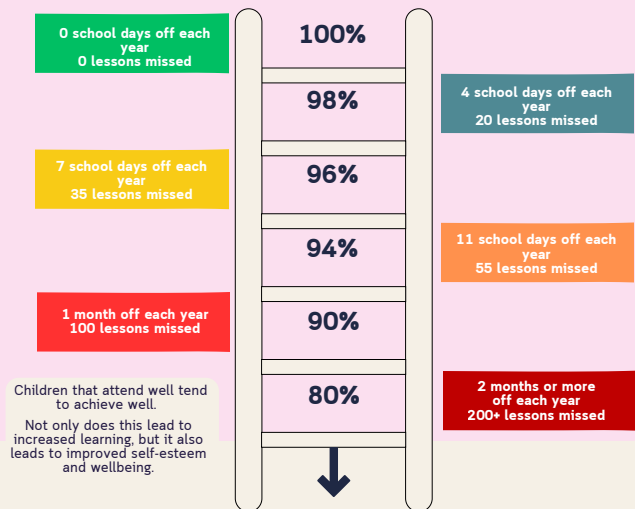
Absence from School

- Absence should only occur when your child is far too ill to attend.
- If your child is suffering from **Colds, Headaches, Tiredness** or **Sore throat** we would suggest that you administer paracetamol or ibuprofen and bring them into school, if their condition deteriorates, we will always call you.
- Family holidays and day trips must be arranged outside of school hours.
- Medical or dental appointments should be arranged outside of school hours, if this is not possible supporting evidence should be provided.

ATTENDANCE FOR THIS WEEK...



| | | | |
|---------------|------------|---------------------|------------|
| YEAR R | 96% | YEAR 4 | 95% |
| YEAR 1 | 91% | YEAR 5 | 94% |
| YEAR 2 | 94% | YEAR 6 | 95% |
| YEAR 3 | 91% | WHOLE SCHOOL | 94% |

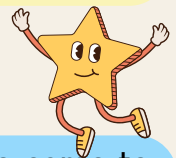


SEND SPOTLIGHT

Next week, if your child has additional needs and is on the SEND register, you will receive their reviewed Individual Support Plan and an updated one ready for the Summer term. Please speak to your child's class teacher if you have any questions about the plans.



CHARACTER SPOTLIGHT



This week we welcomed visitors from Jigsaw, our PSHE scheme provider, who came to experience live lessons at Tyndale. They were blown away by how confidently the children spoke about their learning and how well they were able to recall key knowledge. In Year 5, pupils delivered a fantastic presentation on how to put someone in the recovery position, while in EYFS, children explained why brushing our teeth twice a day is so important for keeping healthy. It was wonderful to showcase the knowledge our Tyndale pupils have and the hard work they put into their lessons. Well done, Tyndale!



TINY

THE TYNDALE
TORTOISE



PIN BOARD

