

Friday 8th May 2026

# Tyndale Times



## WEEKLY UPDATE

It has been another busy and exciting week at Tyndale. We have welcomed candidates into school as part of interviews for our new additional class teacher positions, and it has been fantastic to continue growing Team Tyndale following such high demand for Reception places. Annie rehearsals are also really starting to take shape and we cannot wait to see the final performance. Our Year 2 children had a brilliant trip to the SS Great Britain, while Year 5 have continued impressing us with their determination and resilience in swimming lessons. Next week, our Year 6 children complete their SATs and we are already incredibly proud of them. They have worked so hard and are going to ace them!

*Mr Crouch*



## LEARNING

It has been a productive week of learning at Tyndale, highlighted by Year 2's visit to the SS Great Britain. This trip brought their current theme, "All At Sea," to life, allowing the children to engage directly with maritime history and engineering. Back on school, the school has been full of music during group instrument lessons, where students have shown great focus while developing their instrumental skills.

*Mrs Kirby*

## NEWS

- **Year 6 SATs Week** - good luck to our wonderful Year 6 children! You have worked so hard and we are so proud of you!

## STAY IN TOUCH

### Team Tyndale

[www.tyndaleprimary.co.uk](http://www.tyndaleprimary.co.uk)

[admin@tyndaleprimary.co.uk](mailto:admin@tyndaleprimary.co.uk)

01454 867 180

Follow us on **Facebook**, **Instagram** or **X** to see what we are up to!



**next  
WEEK**

## KEY DATES



- **Monday 11<sup>th</sup> May 2026 - Thursday 14<sup>th</sup> May 2026** - Year 6 SATs Week
- **Monday 11<sup>th</sup> May 2026** - Tennis Roadshow
- **Friday 15<sup>th</sup> May 2026** - Year 6 Pizza Party



## DOJO LEADERBOARD



Year 6	Millie
Year 5	Artur
Year 4	Edie
Year 3	Oliver
Year 2	Emmi
Year 1	Layla
Year R	Oliver



## SHOUTOUTS



- A huge shoutout to our amazing Year 6 children as they complete their SATs this week. We are incredibly proud of the resilience, determination and maturity they have shown throughout the year. They have worked so hard and approached the week with such a positive attitude and confidence. Remember, SATs do not define you – your kindness, character, effort and the incredible young people you are matter far more. We know you are going to do brilliantly, and the whole Tyndale family is behind you every step of the way. Go and smash it, Year 6 – we believe in you!
- Adam (Year 2) - Fantastic answers in full sentences in your lessons this week! Great job!

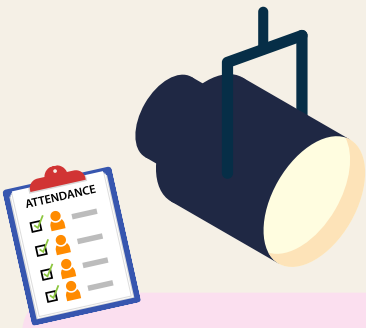


## TEAM TYNDALE



- **Vision** - To provide all children with an exceptional education in a warm, welcoming environment that inspires them to lead change and enables them to become curious life-long learners.
- **Values** - Child-centred, Ready, Respectful, Safe, Ambitious, Resilient, Collaborative, Independent
- **Mission** - Best chance of success!

**EXCEPTIONAL  
EDUCATION**



# ATTENDANCE SPOTLIGHT



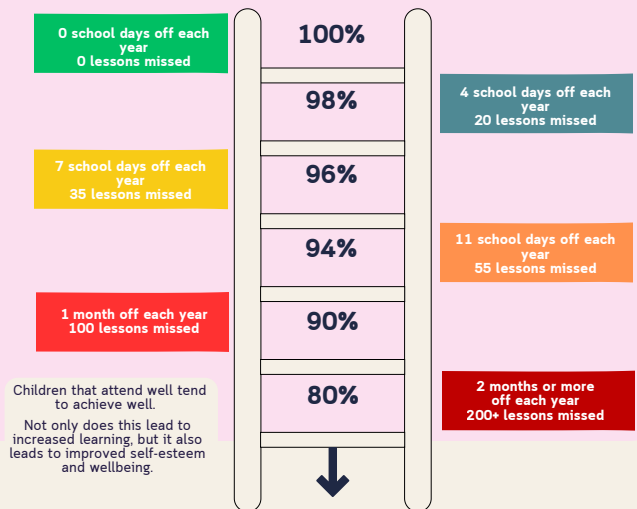
## Absence from School

- Absence should only occur when your child is far too ill to attend.
- If your child is suffering from **Colds, Headaches, Tiredness** or **Sore throat** we would suggest that you administer paracetamol or ibuprofen and bring them into school, if their condition deteriorates, we will always call you.
- Family holidays and day trips must be arranged outside of school hours.
- Medical or dental appointments should be arranged outside of school hours, if this is not possible supporting evidence should be provided.

## ATTENDANCE FOR THIS WEEK...



<b>YEAR R</b>	<b>100%</b>	<b>YEAR 4</b>	<b>99%</b>
<b>YEAR 1</b>	<b>98%</b>	<b>YEAR 5</b>	<b>87%</b>
<b>YEAR 2</b>	<b>99%</b>	<b>YEAR 6</b>	<b>99%</b>
<b>YEAR 3</b>	<b>93%</b>	<b>WHOLE SCHOOL</b>	<b>97%</b>

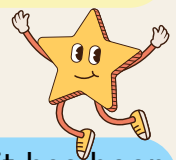


## SEND SPOTLIGHT

Good mental health in childhood helps children feel safe, confident and able to learn, build friendships and manage emotions. Early support can improve behaviour, communication and resilience, while reducing difficulties later in life. Working together, parents and schools can help children develop positive wellbeing, strong relationships and the skills needed for everyday life. [Click here for further information.](#)



## CHARACTER SPOTLIGHT



This week, our Character Curriculum has focused on the value of being safe. It has been wonderful to see so many children demonstrating this in and out of the classroom, making sensible choices and showing awareness as they moved around the school. Pupils have been recognised with dojos and praise from adults for their positive attitudes and responsible behaviour. A special mention goes to Year 2, who showed excellent awareness of safety during their trip to the SS Great Britain. They were fantastic role models, taking extra care around challenging areas such as water, large anchors and heavy chains, and proving that they can be trusted to stay safe even in unfamiliar environments.



THE TYNDALE  
TORTOISE



# PIN BOARD

