

Friday 26th June 2026

# Tyndale Times



## WEEKLY UPDATE



It has been another memorable week at Tyndale, and I would like to thank our entire Tyndale family for the resilience and understanding shown during the exceptionally hot weather, including our difficult decision to close the school for two days. Our children have also completed their final assessments of the year with great determination, and we are incredibly proud of everything they have achieved. A huge thank you to our fabulous Friends of Tyndale for organising such a fantastic Summer Fair - it is going to be wonderful to see so many families enjoying the event together. Looking ahead, we have another exciting week with our Annie performances, welcoming our new Reception families for EYFS Stay and Play, and giving every child the opportunity to spend two days with their new class teacher as we prepare for another successful year at Tyndale.

*Mr Crouch*

## LEARNING



Despite losing two days to the hot weather this week, the children did fantastically completing their assessment week tasks, demonstrating fantastic resilience! Behind the scenes, staff have been hard at work upgrading our Reception and Year 1 continuous provision ahead of next week's transition days, ensuring our pupils have the absolute best chance of success!

*Ms Kirby*

## STAY IN TOUCH

### Team Tyndale

[www.tyndaleprimary.co.uk](http://www.tyndaleprimary.co.uk)

[admin@tyndaleprimary.co.uk](mailto:admin@tyndaleprimary.co.uk)

01454 867 180

Follow us on **Facebook**, **Instagram** or **X** to see what we are up to!



**next  
WEEK**

## KEY DATES



- **Term 1 Clubs and Wraparound Bookings available on MCAS this week**
- **Monday 29<sup>th</sup> June at 08:45-09:15** - Year 5+6 Parent/Carer Information Meeting for PGL Residential
- **Tuesday 30<sup>th</sup> June, Wednesday 1<sup>st</sup> and Thursday 2<sup>nd</sup> July at 6pm (KS1 Hall) - Annie Production Performance - all welcome, tickets available on the door**
- **Wednesday 1<sup>st</sup> - Friday 3<sup>rd</sup> July** - Move Up Days (Year 6 at new Secondary Schools), EYFS Stay and Play Events, and Home Visits

**SHOW**



## DOJO LEADERBOARD



|        |        |
|--------|--------|
| Year 6 | Aadyha |
| Year 5 | Kenoli |
| Year 4 | Edie   |
| Year 3 | Oliver |
| Year 2 | Gift   |
| Year 1 | Archie |
| Year R | Jacob  |



## SHOUTOUTS



- **Friends of Tyndale** - for the huge amount of time and effort they have put in to organising our Summer Fair!
- **All Tyndale Staff** - for working so flexibly throughout the heatwave!
- **All Tyndale children** - for being so sensible during the hot weather, keeping themselves safe.
- **Gardening Club** - for growing so many beautiful fruits and vegetables for us all to taste!

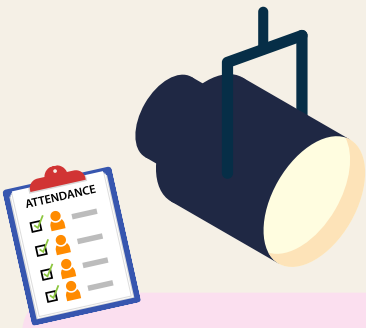


## TEAM TYNDALE



- **Vision** - To provide all children with an exceptional education in a warm, welcoming environment that inspires them to lead change and enables them to become curious life-long learners.
- **Values** - Child-centred, Ready, Respectful, Safe, Ambitious, Resilient, Collaborative, Independent
- **Mission** - Best chance of success!

**EXCEPTIONAL  
EDUCATION**



# ATTENDANCE SPOTLIGHT



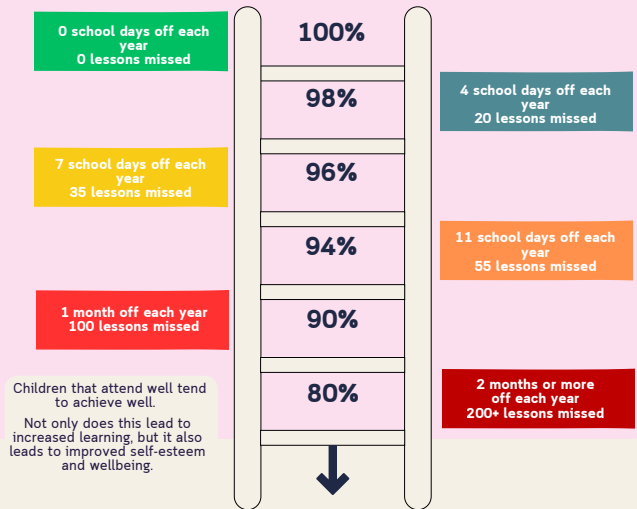
## Absence from School

- Absence should only occur when your child is far too ill to attend.
- If your child is suffering from **Colds, Headaches, Tiredness** or **Sore throat** we would suggest that you administer paracetamol or ibuprofen and bring them into school, if their condition deteriorates, we will always call you.
- Family holidays and day trips must be arranged outside of school hours.
- Medical or dental appointments should be arranged outside of school hours, if this is not possible supporting evidence should be provided.

## ATTENDANCE FOR THIS WEEK...



|               |            |                     |            |
|---------------|------------|---------------------|------------|
| <b>YEAR R</b> | <b>95%</b> | <b>YEAR 4</b>       | <b>95%</b> |
| <b>YEAR 1</b> | <b>92%</b> | <b>YEAR 5</b>       | <b>93%</b> |
| <b>YEAR 2</b> | <b>94%</b> | <b>YEAR 6</b>       | <b>95%</b> |
| <b>YEAR 3</b> | <b>91%</b> | <b>WHOLE SCHOOL</b> | <b>94%</b> |

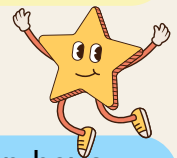


## SEND SPOTLIGHT

South Gloucestershire supports SEND children during the summer through holiday clubs, funded activity programmes, inclusive library events, specialist play schemes, and advice services for families. These services aim to provide enjoyable activities, social opportunities, respite for families, and ongoing SEND support. You can find out more about these on the South Glos website, or SEND and YOU webpage.



## CHARACTER SPOTLIGHT



While Being Safe wasn't our official character focus this week, our children have naturally stepped up as true learning heroes during the recent hot spell! We have been incredibly impressed by how responsibly everyone responded to the heat across the school. The children showed fantastic maturity by actively seeking out shady spots on the playground, keeping themselves hydrated, and understanding the importance of staying inside the cool classrooms during play and lunch when the sun was at its peak. It has been wonderful to see them taking such good care of themselves and each other, proving that making smart, safe choices is second nature to our wonderful pupils. Well done, everyone!

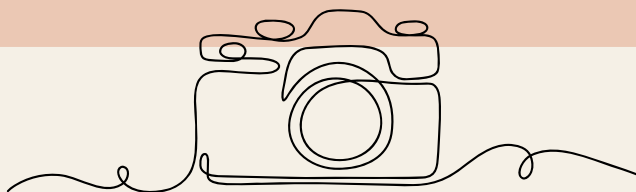


**TINY**

THE TYNDALE  
TORTOISE



**PIN BOARD**





# PIN BOARD

## TERM 1 CLUBS TYNDALE ENRICH



15:20-16:20

### MONDAY - FRIDAY

**TYNDALE RISE  
BREAKFAST CLUB**  
07:40-08:40

£3.90 PER SESSION  
Wraparound Care

**TYNDALE ENRICH  
CLUB**  
15:20-16:20

£3.90 PER SESSION

**TYNDALE ENRICH  
PLUS CLUB**  
15:20 UNTIL 17:30

£9.80 PER SESSION  
Wraparound Care



**BREAKFAST BISTRO  
COMMUNITY  
BREAKFAST**  
08:00-08:30

FREE  
(FOR PARENTS AND CHILDREN)



### MONDAYS

#### RUNNING CLUB

Develop physical fitness, endurance and personal resilience through structured running activities, team challenges and athletic skill development. Encourages healthy lifestyles and positive attitudes.



### TUESDAYS

#### FOOTBALL CLUB

Football Club gives children the opportunity to develop their football skills, teamwork and confidence in a fun, safe and inclusive environment.



### WEDNESDAYS

#### DANCE CLUB

An engaging opportunity for children to develop confidence, coordination and performance skills through a variety of dance styles and choreographed routines. Encourages creativity, teamwork and self-expression.



### THURSDAYS

#### RUGBY CLUB

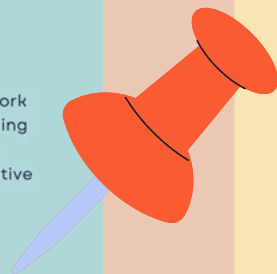
Children will develop core rugby skills, teamwork and sportsmanship through structured coaching and game-based learning. The club promotes resilience and a positive approach to competitive sport.



### FRIDAYS

#### VOLLEYBALL CLUB

A dynamic club focused on developing volleyball techniques, communication and teamwork. Children will build confidence and coordination through skill development, friendly competition and collaborative play.



### SIGN UP...

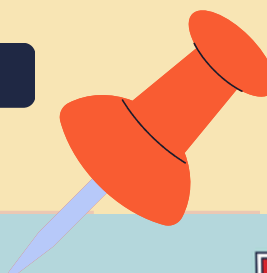
Use the MCAS app to sign up to any clubs or wraparound care.

Please see the back of this leaflet for Payment Options and information.

In addition to the clubs above, there will always be a calm club running at the same time (arts and crafts, coding, lego/board games).



## PIN BOARD



# TYNDALE SCHOOL



## CLUBS



### MONDAY - FRIDAY

**TYNDALE RISE**  
BREAKFAST CLUB  
07:40-08:40

£3.90 PER SESSION



**TYNDALE ENRICH**  
CLUB  
15:20-16:20

£3.90 PER SESSION



**TYNDALE ENRICH**  
**PLUS** CLUB  
15:20 UNTIL 17:30

£9.80 PER SESSION



**Before and after school clubs and care for children that attend Tyndale during term time.**

**Tyndale Rise** - Breakfast is provided within the cost for the breakfast club provision. Children will have breakfast, play board games, and make arts and crafts.

**Tyndale Enrich** - Children will have access to a range of enrichment clubs from sports, arts and crafts, cooking, to performing arts.

**Tyndale Enrich Plus** - A snack is provided within the cost for the after-school club provision. Children will take part in a range of enrichment activities.



### SIGN UP...

Use the **MCAS app** to sign up to any clubs or wraparound care.

Please see the back of this leaflet for Payment Options and information.

Clubs will go 'live' around 4 weeks before the term starts.



**BREAKFAST BISTRO**  
COMMUNITY  
BREAKFAST  
08:00-08:30



FREE  
(FOR PARENTS AND CHILDREN)

Households eligible for **Tax-Free Childcare** or **Universal Credit Childcare** will be able to use the support to help pay for clubs and wraparound care.

- **Tax-Free Childcare** could save eligible parents up to £2,000 per year.
- **Universal Credit Childcare** could save eligible parents up to 85% of their childcare costs.

To check if you are eligible for Tax-Free Childcare or Universal Credit Childcare, visit [Childcare Choices](#).

## PIN BOARD

# TYNDALE SCHOOL



## CLUBS

## PAYMENT OPTIONS



### OPTION 1 - STANDARD PAYMENT

1

Pay as usual for clubs/wraparound by booking using the MCAS app.

### Option 2 - Tax-Free Childcare Account

2

*Steps 1-3 need to be completed in advance of when you want to book clubs/wraparound so you have the credit applied to book.*

- 1) Deposit money into your Tax-Free Childcare Account and await the government top-up (£2 for every £8 deposited).
- 2) Transfer the money into our Tyndale Primary School Bank Account.
  - Sort Code: 309836, Account Number: 60310468
- 3) Send the transaction number (confirmation of payment) to:  
admin@tyndaleprimaryschool.co.uk
  - As soon as we have this, we will apply a voucher (credit) to your MCAS account for you to use.
- 4) Pay as usual for clubs/wraparound by booking using the MCAS app (the credit will be on your account for you to use to pay).

### OPTION 3 - UNIVERSAL CREDIT

3

- 1) Pay as usual for clubs/wraparound by booking using the MCAS app.
- 2) Save and use the receipt to claim back through Universal Credit (up to 80% off the cost).
- 3) Report the childcare costs through your Universal Credit online account and upload evidence if requested and receive up to 85% of the cost back.

### SIGN UP...

Use the MCAS app to sign up to any clubs or wraparound care.

Clubs will go 'live' around 4 weeks before the term starts.

